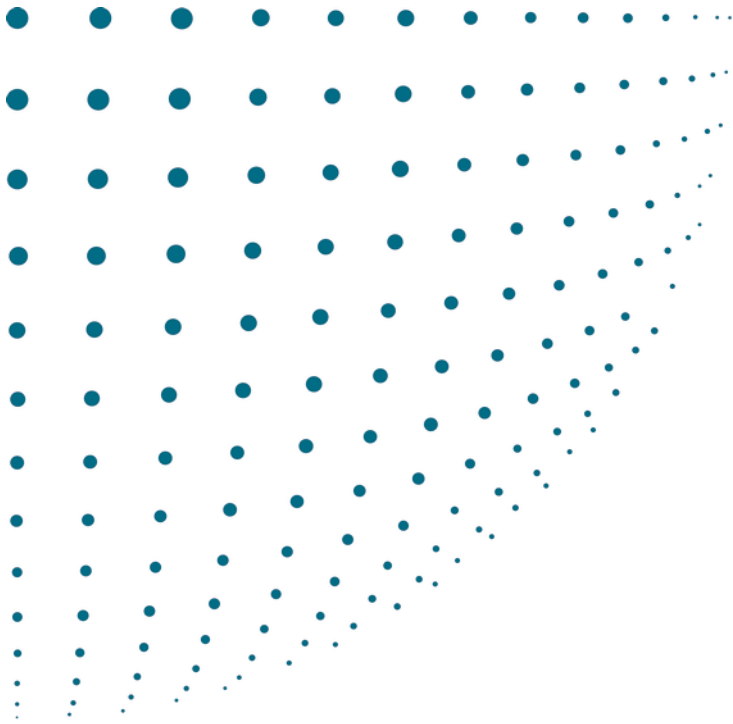


RICOH

Affordable, versatile B/W laser printers



Aficio™ SP 3500N/SP 3510DN

Compact, speedy and functional

Smart and fast, the Aficio™SP 3500N/SP 3510DN are ideal for any small office. Compact enough to fit unobtrusively on a desk, these B/W A4 laser printers meet all your needs for everyday personal document production. They are easy to operate and simple to maintain, and come network-ready as standard. Moreover, they are extremely budget-friendly.

- Productive: 28 pages per minute.
- 2-line LCD panel for easy operation.
- Standard networking with easy network management.
- Versatile printing.
- Attractive rounded two-tone styling.



Easy and efficient



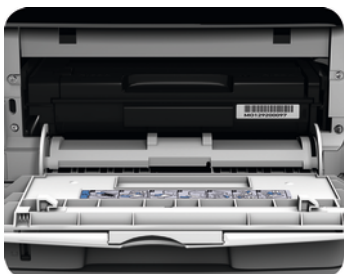
RICOH: YOUR PRINTER PARTNER

Ricoh is renowned worldwide as a quality manufacturer of innovative, functional and cost-effective MFPs. Ricoh has used its experience and expertise in MFPs to expand and enhance its range of colour and B/W office printer solutions. This is great news for you as many of the benefits that users enjoy with Ricoh MFPs are now available in Ricoh's office printer lines. The Aficio™SP 3500N/SP 3510DN A4 B/W laser printers therefore offer you exceptional value to meet your company-specific needs, issues and challenges.



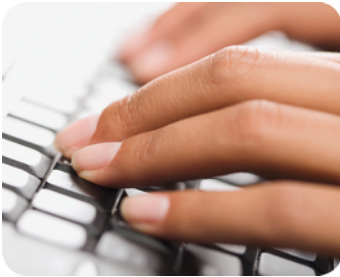
HIGHLY PRODUCTIVE

- Warm-up: less than 20 seconds.
- First print ready: less than 8 seconds.
- Continuous print speed: 28 pages per minute.
- Maximum capacity: 550 sheets.
- Duplex printing (SP 3510DN).



SIMPLE TO OPERATE

Like all Ricoh products, the SP 3500N/SP 3510DN are refreshingly easy to use – thanks partly to a 2-line LCD operating panel. They are also simple and budget-friendly to maintain. The single all-in-one cartridge is easy to replace – with only one hand. Changing the printer's status is also simple via its Web Image Monitor and Smart Organizing Monitor.



EASY TO CONNECT

The SP 3500N/SP 3510DN are perfect for shared use. With standard USB 2.0 and Ethernet 10 base-T/100 base-TX, they fit right into your existing network. You can send each job to the most appropriate network machine. That way, you get the best value from each of your output systems.

VERSATILE PRINTING

- Wide range of formats such as A4, A5, A6, B5, B6, Letter and Executive.
- Use plain and recycled paper up to 162 g/m².
- Print on envelopes and transparencies.
- Save time by collating your prints automatically.
- Protect confidential documents by using a watermark.



ENVIRONMENTALLY FRIENDLY

At Ricoh we help you lower the environmental impact of your office as well as lower your cost. The Aficio™SP 3500N/SP 3510DN have eco-friendly and money-saving features such as short warm-up time, ultra-low sleep mode, increased toner yield, duplex printing (SP 3510DN), Energy Saver mode, and low Typical Electricity Consumption. In addition, Ricoh products are Energy Star compliant. This means less CO₂ is produced in providing the energy needed to run Ricoh devices.

Aficio™ SP 3500N/SP 3510DN

GENERAL

Warm-up time:	20 seconds
First output speed:	8 seconds
Continuous output speed:	28 pages per minute
Memory:	Standard: 64 MB
Dimensions (W x D x H):	370 x 392 x 262 mm
Weight:	11.7/12.7 kg
Power source:	220 - 240 V, 50/60 Hz
Duty cycle:	35,000 prints per month

PRINTER

Printing process:	Laser beam scanning, electro-photographic printing
Printer language:	Standard: PCL5e, PCL6, PostScript® 3™ emulation
Print resolution:	Maximum: 1,200 x 1,200 dpi
Fonts:	PCL: TrueType: 80 fonts PS3: TrueType: 80 fonts
Interface:	Standard: USB 2.0, Ethernet 10 base-T/100 base-TX
Network protocol:	TCP/IP, IPP
Windows® environments:	Windows® XP Windows® Vista Windows® 7 Windows® Server 2003 Windows® Server 2008
Mac OS environments:	Macintosh OS X v10.4 or later

PAPER HANDLING

Recommended paper size:	Standard paper tray(s): A4, A5, A6, Optional paper tray(s): A4, A5, Bypass tray: A4, A5, A6
Paper input capacity:	Standard: 250 sheets Maximum: 550 sheets Bypass tray: 50 sheets
Paper output capacity:	Maximum: 125 sheets
Paper weight:	Standard paper trays: 52 - 162 g/m ² Optional paper trays: 60 - 105 g/m ² Bypass tray: 52 - 162 g/m ² Duplex tray: 60 - 105 g/m ²
Media capability:	Standard paper trays: Plain paper, Recycled paper, Optional paper trays: Plain paper, Recycled paper, Bypass tray: Plain paper, Recycled paper, Envelopes

ECOLOGY

Power consumption:	Maximum: 880 W Energy Saver timer: 5 W
--------------------	---

OPTIONS

1 x 250-sheet paper tray

CONSUMABLES

All-in-one cartridge capacity:	Black: 2,500/6,400 prints
Starter kit:	Black: 1,500 prints

ISO/IEC19752 is used to measure the above toner yield.

PCL5e driver is not provided (the controller can receive the PCL5e command from host).

Short and long yield cartridges are available (2,500 or 6,400 sheets).

For availability of models, options and software, please consult your local Ricoh supplier.

ISO9001 certified, ISO14001 certified, ISO27001 certified

All brand and/or product names are trademarks of their respective owners. Specifications and external appearance are subject to change without notice. The colour of the actual product may vary from the colour shown in the brochure. The images in this brochure are not real photographs and slight differences in detail might appear.

Copyright © 2012 Ricoh Europe PLC. All rights reserved. This brochure, its contents and/or layout may not be modified and/or adapted, copied in part or in whole and/or incorporated into other works without the prior written permission of Ricoh Europe PLC.



RICOH

www.ricoh-europe.com

For more information,
please contact