

RICOH

High Speed
Cost Saving
Double-Sided Printing



Priort™ DX 4640PD

The World's First Double-Sided Priort™ Digital Duplicator

For high volume users wanting to accelerate print production and reduce costs, the Priort™ DX 4640PD is a clear winner. This innovative product boosts productivity, enabling you to print both sides of an A4 page in a single pass, at an ultra-fast 240 prints per minute (ppm). It saves time and money by making high volume, double-sided printing a simple, continuous process. The network-ready DX 4640PD's flexible paper handling and advanced High Quality system give you the power to print outstanding quality documents on a variety of paper stocks up to A3 size. User friendly and simple to operate, it offers the convenience of either desktop network printing or easy walk-up access. The fast, affordable DX 4640PD significantly relieves pressure in high volume environments. It improves efficiency and profitability with extremely rapid, single pass printing of double-sided documents, at lower cost than other high output multifunctional devices.



Ultra-Fast Duplex Printing

The Priort™DX 4640PD is a breakthrough for busy departments and high volume environments with a regular need for fast, automatic double-sided printing. Now operators can accelerate throughput and relieve pressure on other devices by transferring longer print runs to the ultra-fast DX 4640PD.

Increase High Volume Productivity

More jobs can now be processed in less time. The revolutionary DX 4640PD boosts print room productivity with cost efficient double-sided printing at an amazing 240 prints per minute (ppm). For uninterrupted high volume printing, a massive 3,000 sheets can be handled via the optional Priort™LS3000R large capacity system.



Extremely fast, automatic double-sided printing boosts high volume productivity.



Continuous uninterrupted high volume printing.



Create Impact with Spot Colour

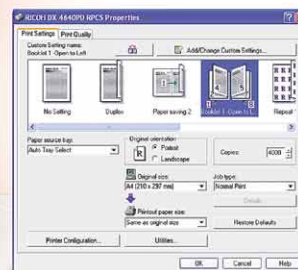
Vivid spot colour can easily be added to your documents with the optional colour drum units. The DX 4640PD can print at high speed on a variety of paper weights and sizes, plus single-sided A3 printing at a rapid 120 ppm. It offers users the flexibility to produce a wider range of colour enhanced documents including newsletters, posters, menus, tickets and price lists, quickly and cost effectively at high volume.

Low Cost, High Volume Printing

The cost saving benefits of double-sided printing become instantly available at high volume with the DX 4640PD. You can quickly save up to 50% of your paper costs, and double-sided jobs can be handled faster and more profitably with easy, single pass printing.

Superb, Consistent Print Quality

You can rely on the DX 4640PD to deliver outstanding quality day after day. Ricoh's innovative High Quality system combines advanced master and ink technology with Automatic Pressure Control to balance ink density on every page, however challenging the operating conditions. It ensures professional looking output with crisp, flawless text and clean, sharp imaging every time.



Print documents in your preferred format with the easy to use RPCS™ printer driver.

Simple, Effortless Printing

The quick-start touch screen provides access to all key functions, making everyday operation extremely easy. Seamless integration into your existing document environment is straightforward with the network-ready DX 4640PD. Ricoh's RPCS™ printer driver makes printing intuitive and effortless. Simply click on an icon to print previously saved or common output settings, such as double-sided or 2-up, in one command. In addition, an optional embedded Hard Disk Drive offers a document library for instant recall of frequently used jobs, such as expense forms or letterheads.

Environmentally Focused

The Priport™DX 4640PD's double-sided printing saves paper and uses less power by printing both sides of a sheet in a single pass. The DX 4640PD also complies with EU environmental legislation*, which means no lead, chromium, PVC or cadmium is used during the manufacturing process of this device.



The image on these pages is not a real photograph and slight differences in detail might appear.

* In compliance with EU RoHS directive (RoHS: Restriction of Hazardous Substances, July 2006).



Priort™ DX 4640PD

Specifications



PRINTER

Printer language:	Standard:	RPCS™
	Option:	Adobe® PostScript® 3™
Interface:	Standard:	USB 2.0
	Option:	Ethernet 10 base-T/100 base-TX Bi-directional IEEE 1284 Wireless LAN (IEEE 802.11b)
Memory:	Standard:	128 MB (64 MB resident + 64 MB additional memory)
	Maximum:	320 MB (with optional 128/256 MB)
Network protocol:	TCP/IP, IPX/SPX, NetBEUI, AppleTalk	
Supported environments:	Windows® 95/98/Me/NT4.0/ 2000/XP/Server 2003 Macintosh 8.6 - 9.x (OS X Classic) ¹ Macintosh X (10.1 - 10.4) (native mode) ¹	

GENERAL

Printing process:	Digital, press roller system, printer controller built-in		
Originals:	Sheets/books		
Original size:	Platen glass: Maximum:	300 x 432 mm	
	ARDF:	A5 - A3	
Print paper size:	Simplex: Minimum:	70 x 148 mm	
	Maximum:	325 x 447 mm	
	Duplex:	210 x 297 mm (A4)	
Print paper weight:	Simplex:	47 - 210 g/m ²	
	Duplex:	64 - 105 g/m ²	
Print area:	Maximum:	290 x 410 mm	
	Duplex:	290 x 200 mm	
Print speed:	Simplex:	60 - 135 prints per minute (ppm) (B4 and below)	
		60 - 120 prints per minute (ppm) (A3)	
	Duplex:	120 - 240 prints per minute (ppm) (A4)	
First print speed:	Simplex:	12 seconds (A4)	
	Duplex:	46 seconds (A4)	
Resolution:	Scanning:	600 x 400 dpi	
	Printing:	400 x 400 dpi	
Image modes:	Letter, photo, letter/photo, tint and pencil		
Image position:	Vertical: Simplex:	± 15 mm	
	Duplex:	± 7.5 mm	
	Horizontal:	± 10 mm	
	Minimum movable unit:	0.25 mm	
Reproduction ratios:	50 - 200% (in 1% steps)		
Colour printing:	By using optional colour drum unit		
Paper feed/ delivery table capacity:	1,000 sheets (80 g/m ²)		
Power source:	220 - 240 V, 50/60 Hz		
Power consumption:	Simplex: Master making:	Maximum 340 W	
	Printing:	Maximum 305 W (at 135 ppm)	
	Duplex: Master making:	Maximum 430 W	
	Printing:	Maximum 385 W (at 240 ppm)	
	Energy saver mode:	Less than 7 W	

Dimensions (W x D x H):	With platen cover:	1,420 x 720 x 1,020 mm
	With ARDF:	1,420 x 720 x 1,130 mm
Weight:	With platen cover:	Less than 118.5 kg
	With ARDF:	Less than 126.5 kg

ADDED VALUE FEATURES

Combine/Image Repeat Mode, Margin Erase, User Codes, Confidential/Security Mode, Auto and Directional Magnification, Overlay Mode, Programme Mode, Class/Memory Mode, Makeup Function, Auto Density Control, Auto Shut Off Mode, A4 master cut with A3 drum and Skip Feed for simplex printing

HIGH VOLUME PRODUCTION OPTION

Priort™LS3000R – Large Capacity System

Configuration:	Large capacity input tray & large capacity output tray	
Paper feed/ delivery tray capacity:	3,000 sheets (80 g/m ²)	
Print paper size:	Minimum:	110 x 180 mm
	Maximum:	325 x 447 mm
Print paper weight:	47 - 210 g/m ²	

OTHER OPTIONS

- Priort™TC-IR – Twin Colour Printing System
- Platen cover
- 50-sheet Auto Reverse Document Feeder
- Colour drum units
- 40 GB Hard Disk Drive
- 128/256 MB memory
- Cabinet
- Tape dispenser

CONSUMABLES

- PRIPORT™ master type DX 4640L (more than 200 A3 masters/roll)
- PRIPORT™ black ink type DX 4640 (1,000 ml)
- PRIPORT™ colour inks type VII (1,000 ml):
red, blue, green, brown, grey, yellow, purple, burgundy, maroon,
navy, orange, teal, violet, gold, hunter green, reflex blue
- CM ink (custom made colours, 1,000 ml)
- Tape dispenser tape

¹ Adobe® PostScript® 3™ option required.

For availability of models, optional apparatus and software, please consult your local Ricoh supplier.



ISO9001: 2000 certified
ISO14001 certified

Ricoh has designed this product to meet EC ENERGY STAR guidelines for energy efficiency.

Ricoh believes in conserving the earth's precious natural resources. This brochure is printed on environmentally friendly paper: 50% recycled fibres, 50% chlorine free bleached pulp.

All brand and/or product names are trademarks of their respective owners.

Specifications and external appearance are subject to change without notice. The colour of the actual product may vary from the colour shown in the brochure.

Copyright © 2007
RicoH Europe (Netherlands) B.V.
All rights reserved. This brochure, its contents and/or layout may not be modified and/or adapted, copied in part or in whole and/or incorporated into other works without the prior written permission of Ricoh Europe (Netherlands) B.V.

RICOH

For more information, please contact:

RICOH EUROPE (NETHERLANDS) B.V.
P.O. Box 114, 1180 AC Amstelveen,
The Netherlands.
Phone: +31 (0)20 54 74 111
Fax: +31 (0)20 54 74 222

www.ricoh-europe.com